

Finger Lakes Community College

# Emergency Action and Response Plan

## Site Specific Information



Viticulture Center  
100 Empire Dr.  
Geneva, NY 14456

## Table of Contents

11. Site Specific Information.....	3
11.1. Site Contacts .....	3
11.2. Emergency Responders .....	3
11.3. Evacuation Route Maps.....	4
11.4. Areas of Refuge.....	5
11.5. Assembly Areas.....	5

## 11. Site Specific Information

### 11.1. Site Contacts

Role	Position or Name	Office Phone
Plan Administrator	Matthew McGrath, FLCC Chief of Campus Police	(585)785-1437
Fire Contact	Derrick Smith, FLCC Assistant Chief of Campus Police	(585) 785-1471
EHS & Facilities Contact	Catherine Ahern, Director of Facilities	(585) 785-1273
Primary Site Contact	Gina Lee, Viticulture and Wine Center Coordinator	(585) 785-1183

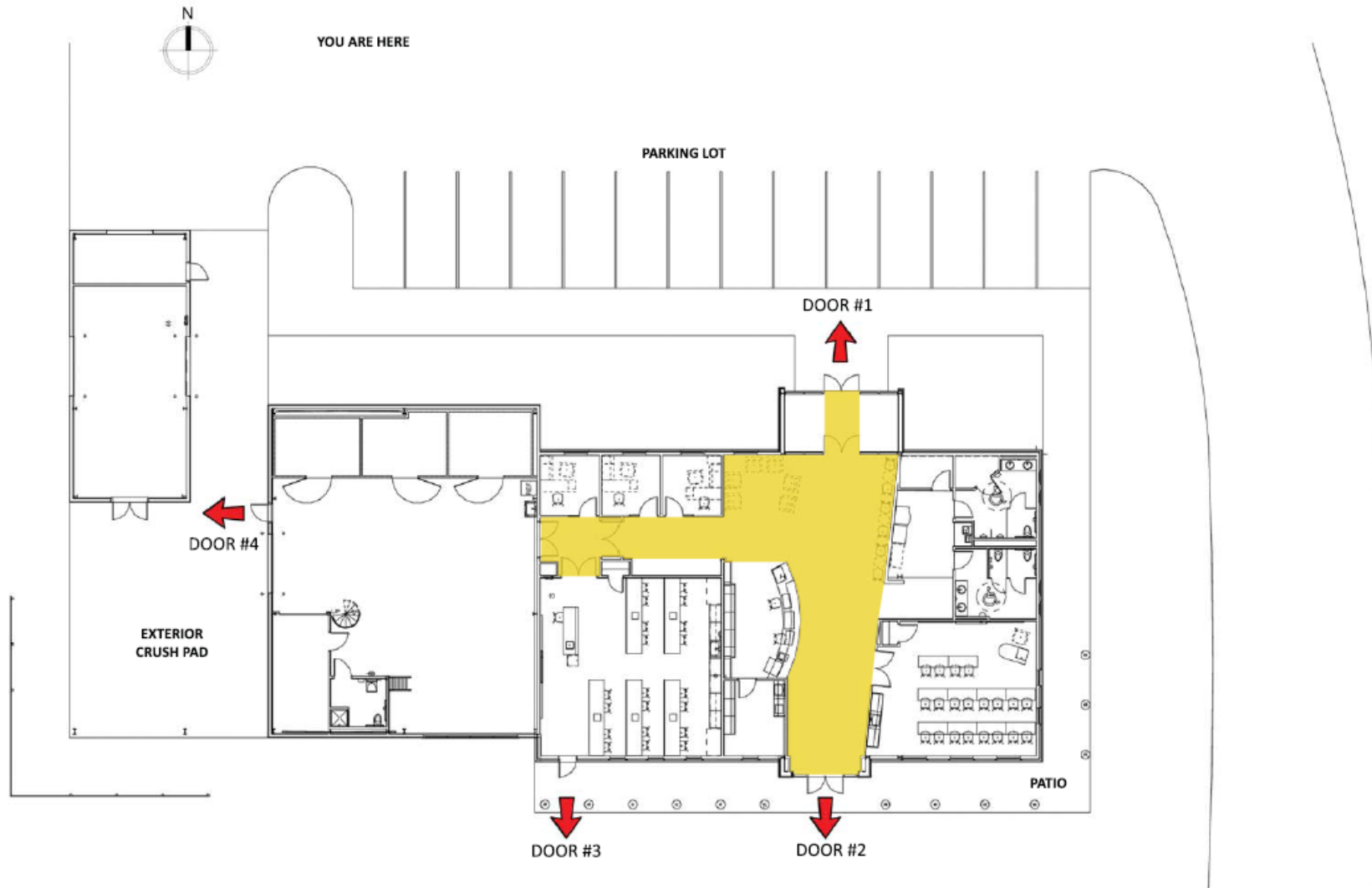
### 11.2. Emergency Responders

Only trained emergency responders are assigned to perform medical or rescue duties. No other employees are assigned to perform medical or rescue duties during emergencies. Rescue and medical assistance for injured persons will be provided by:

- Geneva Fire District
- Finger Lakes Ambulance
- Ontario County Sheriff
- New York State Police

First aid and defibrillation should be provided by trained persons only.

### 11.3. Evacuation Route Maps



## 11.4. Areas of Refuge

There are no Areas of Refuge at this site.

## 11.5. Assembly Areas

There is an Emergency Assembly Area in the parking lot.

